

Model: Model C – P1		Date: 2-Oct-03	No.: MG094001
Modified Article: Rubber Foot		Prepared by: T. Shintani	
From: 1st Technical Support Sec. Service Support Dept.			
Reason for Modification:	<input type="checkbox"/> Parts catalog correction <input type="checkbox"/> To facilitate assembly <input type="checkbox"/> Part standardization	<input type="checkbox"/> Vendor change <input type="checkbox"/> To improve reliability <input checked="" type="checkbox"/> Other	<input type="checkbox"/> To meet standards ()
Modification Schedule:	After the old parts have become out of stock.		

The material of the following has been changed to a different rubber to further increase its reliability.

Old part number	New part number	Description	Q'ty	Int	Page	Index	Note
GH010006		Foot Rubber FF – 006	2→2	X/O	21	19	
	→GH010007	Rubber Foot FF – 006 (P4070)N					

Reissued: 11-Dec-03

Model: Model C-P1	Date: 17-Nov-03	No.: MG094002a
-------------------	-----------------	----------------

MB Correction

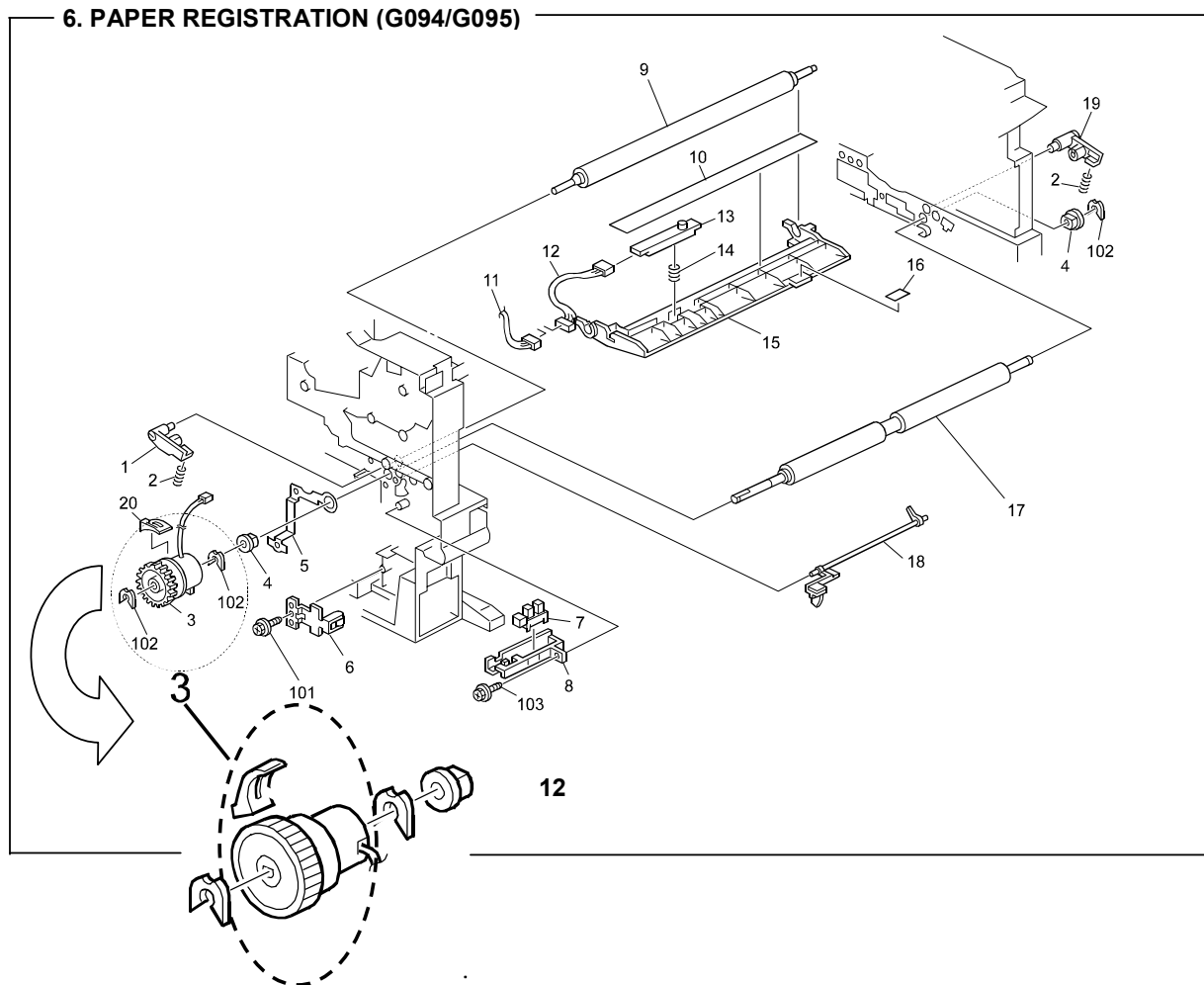
The items in bold italics have been corrected or added.

Modified Article: Parts catalog correction		Prepared by: T. Shintani	
From: 1st Technical Support Sec. Service Support Dept.			
Reason for Modification:	<input checked="" type="checkbox"/> Parts catalog correction	<input type="checkbox"/> Vendor change	<input type="checkbox"/> To meet standards ()
	<input type="checkbox"/> To facilitate assembly	<input type="checkbox"/> To improve reliability	
	<input type="checkbox"/> Part standardization	<input type="checkbox"/> Other	
Modification Schedule:	From first mass production.		

Please apply the following P/N corrections to your Parts Catalogs.

Incorrect Part Number	Correct Part Number	Description	Q'ty	Int	Page	Index	Note
AX200208		Magnetic Clutch – Z45	1→0	- / -	13	3	*
G0763321		Clutch Sleeve Cover	1→0	- / -	13	20	*
	→ G0763205	Magnetic Clutch : Registration : Ass'y	0→1	- / -	13	3	*

Note: The illustration for the magnetic clutch assembly has been corrected as follows:



Model: Model C- P1		Date: 26-Apr-04	No.: MG094003
Modified Article: Engine Board		Prepared by: A. Ishiyama	
From: 1st Technical Support Sec. Service Support Dept.			
Reason for Modification:	<input type="checkbox"/> Parts catalog correction <input type="checkbox"/> To facilitate assembly <input type="checkbox"/> Part standardization	<input type="checkbox"/> Vendor change <input type="checkbox"/> To improve reliability <input checked="" type="checkbox"/> Other	<input type="checkbox"/> To meet standards ()
Modification Schedule:	From first mass production.		

Two new engine boards have been registered in place of the one G0965116 board (service parts correction).

Old Part Number	New Part Number	Description	Q'ty	Int	Page	Index	Note
G0965116		PCB EGB EXP ASS'Y	1→0		27	10	1
	G0985102F	PCB EGB ASS'Y - NA	0→1	X/O	27	10	2
	G0985104F	PCB EGB ASS'Y - EU	0→1	X/O	27	10	2

Important Notes:

1. Old boards are still usable:

If the old G0965116 engine board has been ordered (in stock) or is installed on a machine in the field, please modify the board at the next service visit. See RTB RG094002 for the specific procedure and other details.

2. Usage with each model:

Part No.	G094/G095				
	11	17	22	24	27
G0985102	√	√			
G0985104			√	√	√

Reissued: 15-Sep-04

Model: Model C- P1	Date: 18-Aug-04	No.: MG094004a
--------------------	-----------------	----------------

MB Correction

The items in bold italics have been corrected or added.

Modified Article: Controller Board		Prepared by: A. Ishiyama	
From: 1st Technical Support Sec. Service Support Dept.			
Reason for Modification:	<input type="checkbox"/> Parts catalog correction <input type="checkbox"/> To facilitate assembly <input type="checkbox"/> Part standardization	<input type="checkbox"/> Vendor change <input checked="" type="checkbox"/> To improve reliability <input type="checkbox"/> Other	<input type="checkbox"/> To meet standards ()
Modification Schedule:	From July '04 production		

This change was made to stabilize the initialization of an ASIC at the time power is turned on or reset:

- Resistor R524 (P/# 16504103) has been removed. A jumper wire was added to make a short circuit.

Old Part Number	New Part Number	Description	Q'ty	Int	Page	Index	Note
G0945701	G0945702	Controller Board – G094 Model	1→1	X/O	27	6	
16504103		Resistor – 10KΩ ± 5% 1/10W	53→52	-	37	169	
G0955701	G0955702	Controller Board – G095 Model	1→1	X/O	27	6	
16504103		Resistor – 10KΩ ± 5% 1/10W	53→52	-	47	179	

Model: Model C- P1	Date: 18-Nov-04	No.: MG094005
--------------------	-----------------	---------------

Modified Article: Hot Roller		Prepared by: A. Ishiyama	
From: 1st Technical Support Sec. Service Support Dept.			
Reason for Modification:	<input type="checkbox"/> Parts catalog correction <input type="checkbox"/> To facilitate assembly <input checked="" type="checkbox"/> Part standardization	<input type="checkbox"/> Vendor change <input type="checkbox"/> To improve reliability <input type="checkbox"/> Other	<input type="checkbox"/> To meet standards ()
Modification Schedule:	From September '04 production		

Old part number	New part number	Description	Q'ty	Int	Page	Index	Note
AE011076	G1294063	Hot Roller	1→1	O/O	17	7	

Change/Reason: Parts standardization with the C-P2.

Note: The new G1294063 hot roller is used on the C-P2 from the beginning of mass production.

Model: Model C-P1		Date: 12-Jan-05	No.: MG094006
Modified Article: Environmental Correspondence: Choke Coil		Prepared by: A. Ishiyama	
From: 1st Technical Support Sec. Service Support Dept.			
Reason for Modification:	<input type="checkbox"/> Parts catalog correction <input type="checkbox"/> To facilitate assembly <input checked="" type="checkbox"/> Part standardization	<input type="checkbox"/> Vendor change <input type="checkbox"/> To improve reliability <input type="checkbox"/> Other	<input type="checkbox"/> To meet standards ()
Modification Schedule:	From January '05 production.		

Incorrect Part Number	Correct Part Number	Description	Q'ty	Int	Page	Index	Note
G0965205	G1295205	Choke Coil	1→1	O/O	25	17	

Reason:

1. Change of the materials used in the part in accordance with environmental restrictions.

Model: Model C- P1		Date: 20-Jan-05	No.: MG094007
Modified Article: Power Cord – 230V		Prepared by: A. Ishiyama	
From: 1st Technical Support Sec. Service Support Dept.			
Reason for Modification:	<input type="checkbox"/> Parts catalog correction <input type="checkbox"/> To facilitate assembly <input checked="" type="checkbox"/> Part standardization	<input type="checkbox"/> Vendor change <input type="checkbox"/> To improve reliability <input type="checkbox"/> Other	<input type="checkbox"/> To meet standards ()
Modification Schedule:	From January '05 production		

Old Part Number	New Part Number	Description	Q'ty	Int	Page	Index	Note
GZ000003	G1025502	Power Cord – 230V	1→1	O/O	25	9	

Change/Reason: Parts standardization with the next model (Model C-P2).

Note: This applies only to the EU models (230V).

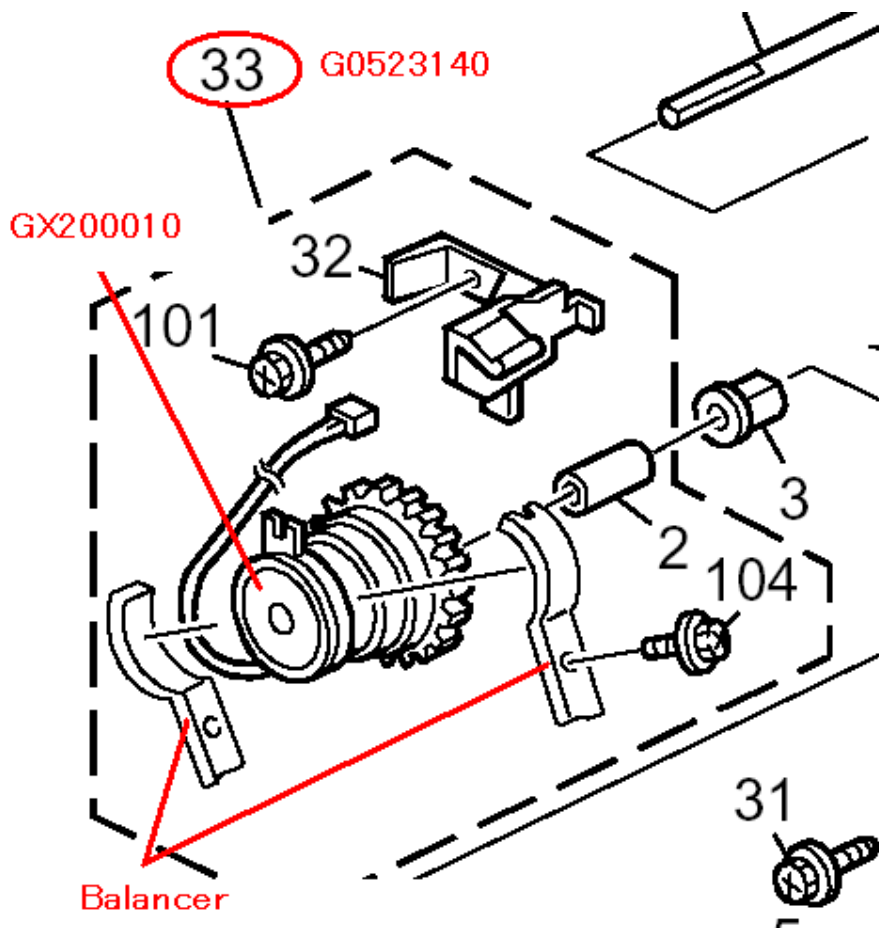
Model: Model C-P1		Date: 3-Feb-05	No.: MG094008
Modified Article: Parts catalog correction - Clutch		Prepared by: A. Ishiyama	
From: 1st Technical Support Sec. Service Support Dept.			
Reason for Modification:	<input checked="" type="checkbox"/> Parts catalog correction <input type="checkbox"/> To facilitate assembly <input type="checkbox"/> Part standardization	<input type="checkbox"/> Vendor change <input type="checkbox"/> To improve reliability <input type="checkbox"/> Other	<input type="checkbox"/> To meet standards ()
Modification Schedule:	From first mass production.		

Incorrect Part Number	Correct Part Number	Description	Q'ty	Int	Page	Index	Note
GX200010		Magnetic Clutch	1→0	- / -	11	1	*

Change: The GX200010 magnetic clutch was deleted from service parts.

Reason: This part was registered as a service part by mistake.

Note: If you need to replace this magnetic clutch, order the Magnetic Clutch Assembly (G0523140, index #33).



Model: Model C- P1	Date: 25-Mar-05	No.: MG094009
--------------------	-----------------	---------------

Modified Article: Environmental Correspondances		Prepared by: A. Ishiyama	
From: 1st Technical Support Sec. Service Support Dept.			
Reason for Modification:	<input checked="" type="checkbox"/> Parts catalog correction <input type="checkbox"/> To facilitate assembly <input type="checkbox"/> Part standardization	<input type="checkbox"/> Vendor change <input type="checkbox"/> To improve reliability <input checked="" type="checkbox"/> Other	<input type="checkbox"/> To meet standards ()
Modification Schedule:	From January '05 production		

Old part number	New part number	Description	Q'ty	Int	Page	Index	Note
G0963053	G1022818	Tray Bottom Plate Adhesion	1→1	X/O	9	14	
G0292608	52152713	Base Pad	1→1	X/O	9	15	

Change/Reason: The material used in these parts (lead) was changed to a non-toxic type.

Reissued: 12-May-05

Model: Model C- P1	Date: 12-Apr-05	No.: MG094010a
--------------------	-----------------	----------------

MB Correction

The items in bold italics have been corrected or added.

Modified Article: Transfer Roller		Prepared by: A. Ishiyama	
From: 1st Technical Support Sec. Service Support Dept.			
Reason for Modification:	<input type="checkbox"/> Parts catalog correction <input type="checkbox"/> To facilitate assembly <input checked="" type="checkbox"/> Part standardization	<input type="checkbox"/> Vendor change <input type="checkbox"/> To improve reliability <input type="checkbox"/> Other	<input type="checkbox"/> To meet standards ()
Modification Schedule:	From January '05 production		

Old Part Number	New Part Number	Description	Q'ty	Int	Page	Index	Note
G0963610	G1296260	Transfer Roller Ass'y	1→1	X/O	15	12	
G0963616	G1296257	Transfer Roller	1→1	X/O	15	14	
G0523618	G1296251	Positioning Roller - Transfer	1→1	X/O	15	15	
G0763619	G1296252	Gear – Transfer Roller	1→1	X/O	15	13	
	G1296255	Bushing	0→2	-	15	25	

Change/Reason: Parts standardization with the next model (Model C-P2).

Important: All of the new parts in the table must be installed together as a set. You cannot install the new parts individually.

